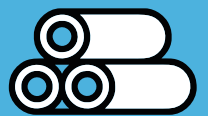
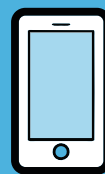




Funded by
the European Union

Promoting
a global
transition
to a green
and circular
economy

the
switch2
green Facility



Supporting the EU Green Deal through international partnerships

The SWITCH to Green Facility provides technical assistance on the circular (and more broadly the green) economy transition, in the form of:



Short-term technical assistance, including through country missions



Quality support, technical backstopping and quality reviews



Capacity building and know-how development and sharing



Awareness raising and information sharing



Support to policy dialogue and programme coordination



Development of tools and methodological support

The Facility encourages and supports actors in the transition to a circular economy, by providing technical assistance to complement existing operational, knowledge or other capacities.

Our mandate

Steered by DG INTPA Unit F2 (Environment, Sustainable Natural Resources), the Facility delivers a set of tools and services supporting the overall coherence, coordination, effectiveness, impact and visibility of EU international partnerships in the green, notably circular, economy. Support can be channelled through Commission services (notably DG INTPA, DG NEAR and EU Delegations), and development partners.

You can find in this brochure:

- examples of **how** the **SWITCH to Green Facility** works with European Commission services and development partners across the globe;
- an outline of the **services** provided by the Facility and of the process to **access** them;
- a description of the **benefits** to those who have received the Facility's technical assistance.

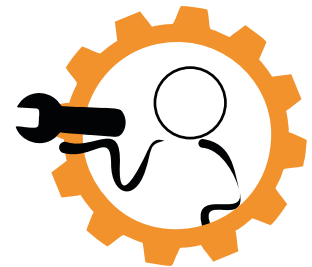
Policy scope

Contributing directly to the **EU Green Deal**, the SWITCH to Green Facility supports the implementation of EU development policy, in line with the European consensus on development. It promotes the **circular economy transition** in partner countries, across the 17 SDGs and in a wide range of cooperation areas, from **private sector development, trade and TVET**, to **green and smart cities, food systems (farm-to-fork), sustainable energy, manufacturing and tourism**, and from **biodiversity, ecosystems and wildlife (incl. forests and land)**, to **water, chemicals, and waste**.



The SWITCH to Green Facility - Services at a glance

The SWITCH to Green Facility works with the European Commission Directorate General **International Partnerships (INTPA)** and **Neighbourhood (DG NEAR)** to provide support to EU Delegations, line DGs and their cooperation partners in the following areas:



Programming

The SWITCH to Green Facility experts provide direct support in **prioritising the Circular** (and more broadly the Green) Economy in the programming process.



Policy dialogue and coordination

SWITCH to Green experts **support policy dialogue**, coordination and exchange of experience with and across EU partner countries. The Facility supports the organisation of events ranging from technical meetings to high-level policy debates, and from brief information sessions to large networking gatherings.



Communication and outreach

SWITCH to Green supports **communication activities** promoting the **circular economy transition**. The Facility publishes Circular economy related news and tools on both www.switchtogreen.eu and <https://europa.eu/capacity4dev/> (Environment, Climate Change and Green Economy group)



Action identification, formulation, delivery (incl. M&E)

SWITCH to Green experts contribute to the **identification and formulation of EU supported actions**, both remotely and through in-country missions. The Facility also assists in the **steering, management, delivery, and M&E** of on-going green economy actions.



Capacity, knowledge and policy development

The Facility provides **trainings and learning events** to assist European Commission staff (at both HQs and EUDs) and international partners. It creates **dedicated tools** contributing to **knowledge sharing**. It supports the **formulation of circular economy policies** and carries out related analysis including on **coherence with other policies**.



The Process – from Request to Result

Requests for technical assistance *can be addressed to INTPA Unit F2 and NEAR Unit A3. The Facility normally mobilises the requested expertise within less than a month's notice.*



CONTACTS

Bernard Crabbé
 Team Leader Environment Mainstreaming and Circular Economy
 DG International Partnership Unit F2
Bernard.CRABBE@ec.europa.eu
INTPA-F2@ec.europa.eu

Sandrine Beauchamp
 Policy Officer
 DG NEAR Unit A3
Sandrine.beauchamp@ec.europa.eu



TA process

DG unit/EUD initiates dialogue on support needed and potential assistance from the Facility

Brief discussion on the scope of services

TA DELIVERY OPTIONS

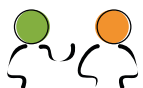


Options provided by the SWITCH to Green Facility

Consultation with DG unit/EUD prior to selection of experts / fine-tuning of TA content

Implementation of the assignment by the Facility expert(s) under the steering and supervision of the respective DG unit/EUD in close coordination with INTPA unit F2

EXPRESSION OF INTEREST



day one

01

02

03

one month

PROVISION OF SERVICES



SUBMISSION OF REQUEST



DG unit/EUD submits request to INTPA F2 and NEAR A3 by e-mail

Use of simple ToR template provided by the SWITCH to Green Facility

Brief discussion on the resources to be mobilised



MOBILISATION OF TA



The SWITCH to Green Facility liaises with the DG unit/EUD to agree on the mission schedule in line with the ToR

Brief discussion on the mission/expert induction

From Action Identification to Evaluation

Prioritising the Circular (and more broadly the Green) Economy in the programming and action design process is fundamental to the SWITCH to Green Facility's mandate. Relevant tailor-made services are provided in this regard.

Programme and project design and implementation

The SWITCH to Green Facility contributes to the identification, formulation and delivery of EU supported actions related with the green/circular economy through both on-demand provision of short-term expertise and regular reviews of Action Documents and other programme-related documents. Short-term missions may indicatively include consultations with local stakeholders, mapping and analysis of relevant actions and/or policies in the target country/region, drafting of programme documents (including assistance in the quality review process - QRG), technical backstopping to programme/project management and implementation (e.g. review of deliverables, co-organisation of meetings), and direct support to EU partners at country level.

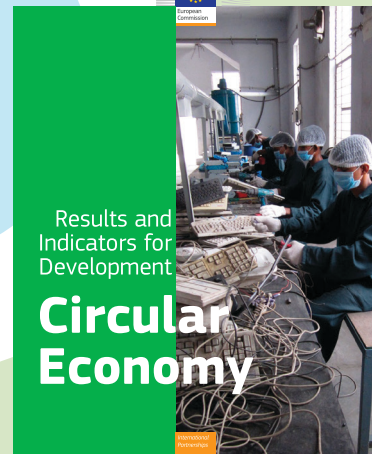


“From the Ministry of Environment and Sustainable Development, specifically the Directorate of Environmental, Sectoral and Urban Affairs, we are very grateful for the work developed by the Consultant, through the collaboration of the European Union and the SWITCH to Green (Facility). The work developed is a very important input to deepen the impact that the National Strategy for the Circular Economy has had in the country.”

Alex Jose Saer Saker, Technical Director, Colombian Ministry of Environment and Sustainable Development

Monitoring and Evaluation tools

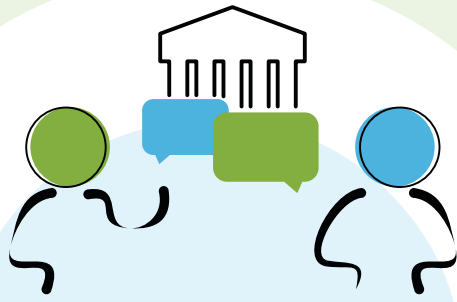
The SWITCH to Green Facility supported INTPA Unit D4 “Performance, Results and Evaluation; Internal Communication, Knowledge Management and Collaborative Methods” and INTPA Thematic Units to develop a results chain and indicator guidance for EU international cooperation on the circular economy. The publication offers a handy tool to elaborate solid logical framework matrices for green economy related activities. It identifies clear and measurable results statements that are in line with INTPA and NEAR policy priorities, as well as with the UN Sustainable Development Goals (SDGs), together with a range of well-established and practical indicators to monitor progress.



Services in a Nutshell

The SWITCH to Green Facility provides technical advice to EU delegations and to INTPA and NEAR HQ Units to better program, design, deliver and monitor/evaluate actions contributing to the circular - and more broadly the green - economy transition in EU partner countries. Experts support EU actions through on-demand provision of short-term expertise – including with direct support offered to EU partners at country level – and through regular reviews of action or other related documents. Technical expert missions can also inform policy processes to facilitate policy dialogue and development at country level.





Creating platforms for policy exchange



Events and meetings, including online events, can be effective tools in exchanging lessons learnt, highlighting impact to development practitioners and stakeholders, and facilitating policy debates to move the green or circular economy agenda forward.



The Facility supports policy and technical dialogue with EU development partners. This may include, for example, contributions to the organisation of **EU Circular Economy Missions** and other outreach events to mobilise government counterparts and businesses in third countries or bringing entrepreneurs and their stories on green and circular businesses to global events, to highlight the potential for replication of good practices. On a regular basis, SWITCH to Green also hosts, (co-)organises and facilitates events promoting the circular (and more broadly the green) economy, with recent highlights including the **EU Pavillion at the World Economy Forum 2022 in Kigali**, side-events for example at the **World Resources Forum 2021 in Ghana**, **EU GREEN Week**, the **COP conferences on climate change** or the **EU Africa Business Forum in 2022**.



Services in a Nutshell

Support from the SWITCH to Green Facility includes full assistance in policy dialogue events, ranging from content formulation to event organisation and communication. The Facility may indicatively develop a concept for the agenda, select qualified speakers, and take care of communication and media as needed. A tailor-made approach to event organisation is applied by the facility.



Transformation requires capacity development

In a changing policy environment, capacity building and knowledge development ensure that expertise and skills stay relevant and up to date. Tools and trainings are part of the SWITCH to Green Facility's mandate.



Designing learning resources

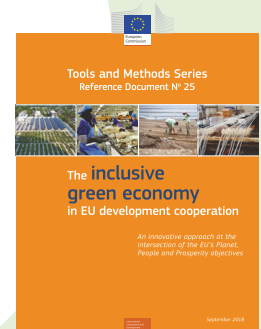
SWITCH to Green assisted INTPA Units F2 (Environment, Sustainable Natural Resources) and R1 (Human Resources, Learning Development and Document Management) in designing a set of new, engaging online courses illustrating the circular economy principles and systems-based approaches. The e-course on Circular Economy (CE) hosted by the [DG INTPA Academy](#), aims to strengthen your understanding of circularity, and of policy measures that accelerate the CE transition. Divided in five sections, the e-course explains what a circular economy transition entails, makes the link with related policy developments, as well as with global challenges and trends, illustrates practical cases from the field, including EU funded projects, and provides information and guidance on monitoring and evaluation.

Webinars and other learning opportunities

Together with other facilities of the Green Deal Knowledge Hub and the Methodological and Knowledge Sharing (MKS) support programme, the SWITCH to Green Facility has conducted webinars on the green, notably circular economy. Webinars on the Circular Economy transition highlight the EU Circular Economy Action Plan implementation with focus on its international dimension (state of play, latest policy developments and implications for EU cooperation /partner countries) and illustrate practical approaches in circular economy policy development and implementation, including lessons learnt from relevant EU cooperation initiatives.

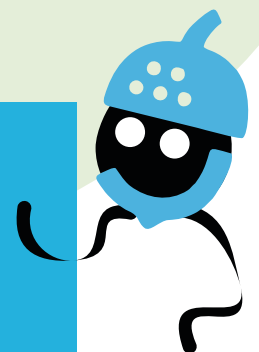
Sharing knowledge that matters

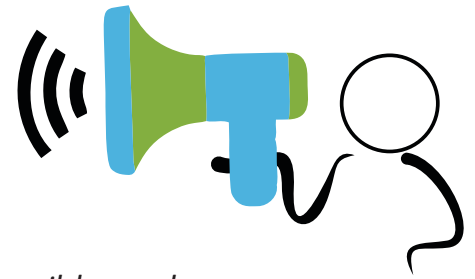
To promote a better understanding of the inclusive green economy, give policy and operational guidance and present best practices, the Facility assisted in the production of the *Reference Document No 25, 'The inclusive green economy in EU development: An innovative approach at the intersection of the EU's Planet, People and Prosperity objectives'*. The publication provides relevant definitions and explains the rationale for cooperation on the green economy, in line with EU policies and a growing interest in partner countries..



Services in a Nutshell

The SWITCH to Green Facility supports the creation of green/circular economy related tools contributing to knowledge sharing. With the development and promotion of tools, the Facility stimulates learning and streamlining of content among a diverse set of target groups. The Facility designs interactive sessions, building on local and international case studies, and linking content to EU and national policies and practices. From policy debates to case story analysis, the Facility experts employ an extensive range of methods to convey their content.





Communicating impacts

Making information on policy developments and impact accessible, and approachable, is essential to the mandate of the facility. Brochures and publications with concise and relevant information are fundamental to reaching target audiences.

Showcasing actions

When policies and programmes are implemented, they turn into stories on the ground. The SWITCH to Green Facility produces publications showcasing successful actions with strong replication potential. The brochure “Supporting the Circular Economy” for example, takes the audience on a journey across selected economic sectors, with a view to inspiring and encouraging a switch to green, notably circular, practices. For the publication the Facility collected facts and figures on the environmental impact of economic activities in different sectors. The information on each sector is complemented with a case story from a project that highlights the perspective of a beneficiary.

Visualizing approaches

For the publication “Supporting the Circular Economy” the Facility developed a set of infographics and [animated illustrations](#) highlighting circular approaches in value chains. The Facility visualises tangible practices to highlight replication potential.

8 Supporting the Circular Economy Sustainable Tourism

The EU SwitchMed programme: An eco-friendly holiday in an organic paradise



In the Oujda d'El Jaidia region of Morocco, a man has decided to bring together tourists, locals and farmers with a vision to construct and operate a small organic paradise for visitors. The EU supports this entrepreneur's efforts through the SwitchMed programme, offering him incubation services to develop his ideas into a viable green business.



Imagine a place that respects humans, the environment, the local region and its biodiversity. A house that is surrounded by wooden pergolas and a biodynamic chalet with shrubs and flowers supporting the native birds in the surrounding fields. A large greenhouse is ready to welcome a group of visitors who are curious to look at the seeds growing in the organic plantations. At the other end, there is a magnificent forest surrounded by green spaces. This place exists for real and can be found in the province of El Jaidia, near Casablanca.



This “Tampay farm – Roof Green House” has been specially designed by Mr. Hamid Ben ElHamed, Head of the cluster of Engineering and an expert in energy and sustainable development, to invite tourists to “holiday responsibly”. Hamid, with the SwitchMed teams at his side, has gone through an incubation phase and has managed to put together his own green business plan. By analysing the market, focusing on demand and risks, Hamid has come out “very excited” with solutions to minimise the risk of debt. Based on an eco-construction, Hamid has used the EU Green label as a reference for tourist accommodation and applies sustainable construction practices, traditionally used in Morocco. This involves the use of timber and natural resources to construct the building material, which energy also reduces their energy consumption and using renewable energy whenever possible. By doing so, Hamid's project is aligned with the [EU4A African Agriculture Adaptation Initiative](#).

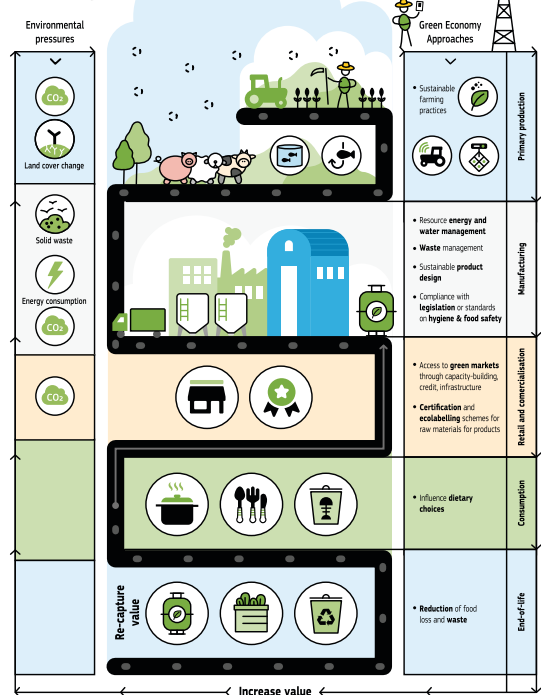
commodation has numerous benefits: awareness amongst tourists of the organic farming process, support for the local economy, links between organic and tourists, and offering a sense of being at one with nature. Hamid claims that, compared to other projects, “By raising awareness of ecology, we will be able to transform this into a desirable tourism model to small farmers and that could be used across towards towns, and make of land its large prospects development”. Hamid foresees the creation of a small daily art-gift, “motes and books devoted to sharing the message throughout the region by travelling in a green van around the local area.”

“I want to welcome customers who are here about nature, calm and well-being, all in comfortable and secure surroundings. Eco-tourists will discover the actions required to conserve the biosphere.”

The Hamid project is based on three aspects: environment, economy and society. It is expected to employ a dozen people at local level and to directly create jobs for other locals through the outdoor market.

story

Green Economy Approaches in the Agri-food Sector



Services in a Nutshell

The SWITCH to Green Facility shares and effectively communicates knowledge to the target groups. Facility experts design and deliver outreach activities and publications in consultation with European Commission staff, notably in DG INTPA and DG NEAR and at EU delegations. As a cross-cutting aspect, the Facility promotes EU visibility in all related actions.

We invite you to visit **the SWITCH to Green Facility** at www.SWITCHtoGreen.eu

The SWITCH to Green Facility is part of the Green Deal Knowledge Hub thematic support services:

B4Life - Biodiversity for Life Facility
EU Greening Facility
EU Worldwide Support Facility for Nationally Determined Contributions
Forests for the Future Facility
Sustainable and Smart Mobility Facility
Sustainable Urban Development Facility
Technical Assistance Facility for Sustainable Energy
Water Facility

If you are interested in **the SWITCH to Green Facility** Services please contact

DG NEAR

Sandrine Beauchamp
Policy officer

DG NEAR- A.3 – Thematic Support – An economy that works for people, green, digital and connected.
Rue de la Loi 15/ Wetstraat 15, B-1049 Brussels, Belgium

Sandrine.beauchamp@ec.europa.eu

DG INTPA

Bernard Crabbé
Team leader Environment mainstreaming and Circular Economy

DG International Partnership Unit F2
European Commission,
L-41 02/62, B-1049 Brussels, Belgium

INTPA-F2@ec.europa.eu
Bernard.CRABBE@ec.europa.eu

Mr Dex Agourides

DG NEAR Lead SWITCH to Green Facility

Square de Meus 37,
B-1000 Brussels, Belgium

dexa@lp.gr

Mr Alexander Charalambous

Team leader SWITCH to Green Facility

Square de Meus 37,
B-1000 Brussels, Belgium

a@lp.gr



COWI



The SWITCH to Green Facility is implemented by a consortium led by Adelphi consult with COWI and Living Prospects.
Disclaimer: Responsibility for the information in this publication lies entirely with authors.